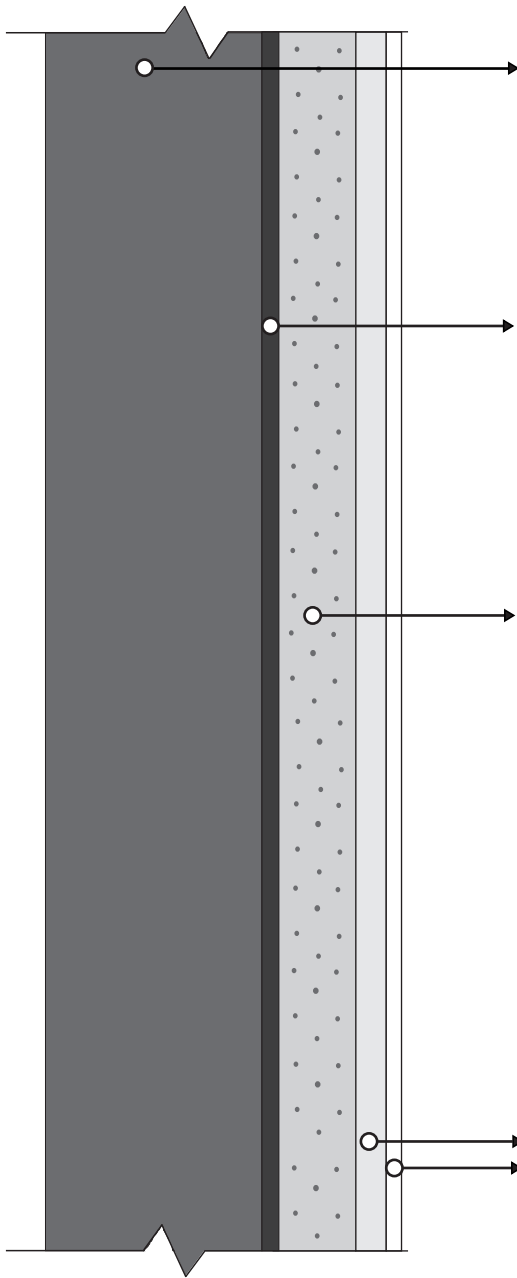


## INSTRUCTION & METHOD STATEMENT

### METHOD STATEMENT CROSS SECTIONAL DIAGRAM: FOR WALL RANDEING.



#### 1) REINFORCED CONCRETE WALL / BRICK WALL

- (i) Substrate must be well cured before commencement of rendering.
- (ii) Ensure substrate is dry, sound & free of contamination (e.g. dust, grease, mould release oil, laitance etc).

**Important:** In extremely dry/hot condition where substrate exhibits an abnormal high degree of water suction, highly recommended to dampen the substrate before commencing rendering.

#### 2) BONDING AGENT (SLURRY BOND COAT)

- (i) Mix 1 part **EziMIX SBR BOND** with 1.5 parts **OPC** (Ordinary Portland Cement)
- (ii) Mix until a thin slurry **Bonding Agent** is obtained.
- (iii) Apply **Bonding Agent** onto RC surface by using brush/roller at thickness not more than 1mm.

**Note:** **Bonding Agent** is Highly recommended to apply when rendering onto external areas, swimming pools or onto difficult substrate/dense & impervious substrate (eg.: waterproofed substrate, concrete etc.)

#### 3) Ezi CEMENT-SAND RENDER

- (i) Mix 1 part **Water** with 5 parts of **Ezi PREMIX RENDER 103**.
- (ii) Mix until consistent mortar is obtained.
- (iii) Immediately place onto the RC surface while the **Bonding Agent** is still wet or tacky.
- (iv) Apply mortar in the normal approved manner, ensuring that it is well compacted during application.

**Note:** When rendering onto external areas, swimming pools or onto difficult substrates, it is recommended to mix **Ezi PREMIX RENDER 103** with **EziMIX MULTI PLUS** to replace gauging water.

**Important:** The ideal thickness of renders is 5 - 15mm thick at 1 coat, for greater thickness recommended to apply in 2 separate layer or more. The first layer should be combed to create "keys" and left to dry before the subsequent layer is applied.

#### 4) FOR BETTER/SMOOTHER INTERNAL FINISHING

Apply **Ezi PLASTER BASE & Ezi PLASTER FINISH** before receive paint.



#### 4) FOR OUTSTANDING TILING FINISHING

Refer to Ezi range of cementitious tile adhesive.



### MATERIAL SAFETY INFORMATION

A non-toxic, cement-based product which is considered non-hazardous in normal usage. Avoid inhalation, ingestion, skin and eyes contact. For more details, please refer to Ezi Material Safety Data Sheet.

When working with this product, recommended to follow the safety precaution below.



WEAR DUST MASK



WEAR SAFETY GOGGLES



WEAR HAND GLOVES



WEAR SAFETY SHOES



KEEP AWAY FROM CHILDREN

### COMPANY INFORMATION

**Ezi MOTARTECH SDN. BHD.** (874800-D)

#### KUALA LUMPUR :

📍 : 2, Jalan Tembaga SD5/2H,  
Bandar Sri Damansara,  
52200 Kuala Lumpur,  
Malaysia.  
☎ : +603-62773709  
📠 : +603-62723760

#### PENANG :

📍 : 80, Jalan Masjid Negeri,  
11600 Penang, Malaysia.  
☎ : +604-6588817  
📠 : +604-6588818

#### Ezi TECHNICAL ADVISORY CENTRE

☎ : +6012-431 8221  
☎ : +6012-478 2142  
✉ : technical@ezi-fix.com  
🌐 : www.ezi-fix.com

#### WAREHOUSE :

📍 : 1888, Jalan Lahar Bubu,  
Kepala Batas, 13200  
Penang, Malaysia.